



Yale JACKSON SCHOOL OF GLOBAL AFFAIRS
Global Health Studies Program

**Global Health Studies Program
Information Session**

October 4 & 11, 2023

Yale Global Health Studies Program

JACKSON SCHOOL
OF GLOBAL AFFAIRS

for Humanity
THE YALE CAMPAIGN

Why Global Health?

Global health is a powerful driver of global affairs today. As the Covid-19 pandemic has demonstrated, disease outbreaks can restructure world economies, transform trade and travel, drive foreign policy, alter behavior, and challenge every aspect of individual lives and social activities.

The multifaceted nature of global health requires interdisciplinary analysis: engaging with economics, history, and politics, as well as with anthropology, law, and sociology, in addition to epidemiology, public health, and medical sciences.

Deep understanding of global health will not only serve our scholars today, it will ground their futures as they think, lead, and act in global contexts.

BY THE NUMBERS

25%

Program expansion
in each of the
past two years

THE PROGRAM ▼

The Yale Global Health Studies Program is designed for undergraduate Yale students interested in addressing pressing global health challenges.

We offer undergraduates the opportunity to engage critically and analytically in global health. Interdisciplinary knowledge is the cornerstone of our training. Students learn relevant research methodologies to develop their understanding of how knowledge in global health is constructed and how this can inform their academic pursuits and future careers. Our curriculum offered a choice of 61 courses each semester in 2021, and 76 courses in 2022.

GLOBAL HEALTH ALUMNI ▼

In 2021, the Program ran its largest-ever application cycle for sophomore undergraduates. We welcomed 30 new Global Health Scholars, bringing our total to 77 Scholars currently in the Program.

Scholars complete foundational courses in global health, a senior research colloquium, and electives drawn from a diverse array of courses. They cover six competency areas: political economy & governance in health, historical approaches, health & societies, biological & environmental influences on health, understanding & interpreting quantitative data, and performance & representation in health.

GLOBAL HEALTH SCHOLARS ▼

In 2021, the Program ran its largest-ever application cycle for sophomore undergraduates. We welcomed 30 new Global Health Scholars, bringing our total to 77 Scholars currently in the Program.

Scholars complete foundational courses in global health, a senior research colloquium, and electives drawn from a diverse array of courses. They cover six competency areas: political economy & governance in health, historical approaches, health & societies, biological & environmental influences on health, understanding & interpreting quantitative data, and performance & representation in health.

GLOBAL HEALTH AWARDS ▼

We launched the Policy and Professional Award (PPA) to support students in high-impact summer internships. We also provide students with summer research awards. For example, in 2021, we funded students to intern at the World Bank in the Health, Nutrition and Population Global Practice team, Save the Children's Climate Change and Health team, and conduct a range of summer research projects ranging from population health in Nepal to nutrition patterns in the United States.

BY THE NUMBERS

77

Global Health
Scholars currently
registered

BY THE NUMBERS

76

Global Health
Courses offered in
Spring 2022

PROGRAM LEADERSHIP



Professor Catherine Panter-Brick is the Global Health Studies Program Director and Yale's Bruce A. and Davi-Ellen Chabner Professor of Anthropology, Health, and Global Affairs. She leads research initiatives to develop effective partnerships between scholars, practitioners, policymakers, and civil society actors, having spent three decades working with communities affected by war, poverty, and marginalization.



Dr. Cara Kiernan Fallon is a Lecturer in Global Health and the Global Health Studies Program Manager. She has interdisciplinary training in ethics, history, public health, and industry, focusing her research on disparities in chronic disease and disability in aging.

INSTITUTIONAL HOME



The Global Health Studies Program thrives within the Jackson Institute for Global Affairs, which will transition into the Jackson School of Global Affairs in 2022, under the leadership of **James A. Levinsohn**, Charles W. Goodyear Professor in Global Affairs.



The Global Health Studies Program



Core Faculty

Learn more about the faculty members who teach the core courses of the GHS program.



Faculty Affiliates

Faculty Affiliates are an interdisciplinary group of scholars, researchers and practitioners in global health who offer advising and support to Global Health Scholars.



Advisory Board

Advisory Board members are scholars and practitioners invited to provide guidance on the Global Health Studies Program.



Global Health Scholars

The program is designed for undergraduate students interested in understanding and addressing pressing global health challenges. Meet the current Global Health Scholars.



About the Program

The GHS MAP provides students rigorous training in and engagement with skills and knowledge relevant to global health research and practice.



Events

The Global Health Studies Program co-hosts a number of talks each year, including the Global Health Studies Speaker Series.



Requirements

The program has been designed to address fundamental and applied economic, political, social, cultural, biological and scientific issues relevant to global health.



<https://jackson.yale.edu/study/global-health-studies/>

Global Health Studies Program Requirements

2 required courses and 4 elective courses

2 Required courses:

1. Global Health: Challenges and Responses (HLTH 230)
2. Senior Research Colloquium (HLTH 490)

4 Electives: Choose 4 from Global Health Competencies

- Biological & Environmental Influences on Health
- Health & Societies
- Historical Approaches
- Performance, Representation & Health
- Political Economy & Governance in Health
- Understanding & Interpreting Quantitative Data

Funded Summer Research (Optional) / Internship Experience & funding through Global Health Summer Awards

Global Health Electives

(Choose from approx. 60-70 courses per semester)

Course Title	Course Number	Competency 1	Competency 2	Instructors	Distributional Requirements	Course description from courses.yale.edu/
Air Pollution Control	ENVE 373, CENG 373	Biological & Environmental Influences on Health	Understanding & Interpreting Quantitative Data	Drew Gentner	QR, SC	An overview of air quality problems worldwide with a focus on emissions, chemistry, transport, and other processes that govern dynamic behavior in the atmosphere. Quantitative assessment of the determining factors of air pollution (e.g., transportation and other combustion-related sources, chemical transformations), climate change, photochemical "smog," pollutant measurement techniques, and air quality management strategies. Prerequisite: ENVE 120
Biology of Malaria, Lyme, and Other Vector-Borne Diseases	HLTH 155, MCDB 106, E&EB 106	Biological & Environmental Influences on Health	Understanding & Interpreting Quantitative Data	Alexia Belperron	SC	Introduction to the biology of pathogen transmission from one organism to another by insects; special focus on malaria, dengue, and Lyme disease. Biology of the pathogens including modes of transmission, establishment of infection, and immune responses; the challenges associated with vector control, prevention, development of vaccines, and treatments. Intended for non-science majors; preference to freshmen and sophomores. Prerequisite: high school biology.
Biology of the Immune System	MCDB 430, IBIO 530, MBIO 530, MCDB 530	Biological & Environmental Influences on Health		Aaron Ring et al.	SC	The development of the immune system. Cellular and molecular mechanisms of immune recognition. Effector responses against pathogens. Immunologic memory and vaccines. Human diseases including allergy, autoimmunity, immunodeficiency, and HIV/AIDS. After MCDB 300.
Biology, the World, and Us	MB&B 105, MCDB 105	Biological & Environmental Influences on Health	Health & Societies	John Carlson, Josh Gendron, Ronit Kaufman, Jennifer Marlon	SC	Biological concepts taught in context of current societal issues, such as emerging diseases, genetically modified organisms, green energy, and the human brain and its disorders. Emphasis on biological literacy to enable students to evaluate scientific arguments.
Climate Change	EPS 101	Biological & Environmental Influences on Health		Mary-Louise Timmermans, Noah Planavsky	SC	An introductory course that explores the science of global climate change. We analyze processes that regulate the climate on Earth, assess the scientific evidence for global warming, and discuss consequences of climate change. We explore Earth's climate history as it relates to the present climate as well as future climate projections. Uncertainty in the interpretation of climate observations and future projections are examined.
Environmental Justice in South Asia	ANTH 322, SAST 306, EVST 324	Biological & Environmental Influences on Health	Political Economy & Governance in Health	Kalyanakrishnan Sivaramakrishnan	SO	Study of South Asia's nation building and economic development in the aftermath of war and decolonization in the 20th century. How it generated unprecedented stress on natural environments; increased social disparity; and exposure of the poor and minorities to environmental risks and loss of homes, livelihoods, and cultural resources. Discussion of the rise of environmental justice movements and policies in the region as the world comes to grips with living in the Anthropocene.
Epigenetics	MCDB 350, MCDB 650	Biological & Environmental Influences on Health		Nadya Dimitrova, Yannick Jacob, Josien van Wolfswinkel	SC	Study of epigenetic states and the various mechanisms of epigenetic regulation, including histone modification, DNA methylation, nuclear organization, and regulation by non-coding RNAs. Detailed critique of papers from primary literature and discussion of novel technologies, with specific attention to the impact of epigenetics on human health. Introductory courses (BIOL 101-104) and two MCDB 200-level courses (strongly recommended: MCDB 202 and MCDB 200 or MCDB 210) or instructor permission.
Evolution and Medicine	HLTH 250, E&EB 335, E&EB 635	Biological & Environmental Influences on Health		Brandon Ogbunu	SC, WR	Introduction to the ways in which evolutionary science informs medical research and clinical practice. Diseases of civilization and their relation to humans' evolutionary past; the evolution of human defense mechanisms; antibiotic resistance and virulence in pathogens; cancer as an evolutionary process. Students view course lectures on line; class time focuses on discussion of lecture topics and research papers. Prerequisite: BIOL 101-104.
Hormones, Evolution, and Human Behavior	ANTH 217	Biological & Environmental Influences on Health		Richard Bribiescas	SO	This course examines the evolution of human behavior through the lens of endocrinology and life history theory. Topics include the evolution of social behavior, pair bonding, parental investment, aggression, sex, feeding behavior, and risk tolerance. This course also addresses these topics with a mindful eye towards variation throughout the human life course from birth to death. Specific attention is made towards examining behavioral endocrinology within the context of human diversity in all its forms, social, biological, and ecological as well as in comparison with other species including non-human primates. ANTH 116, ANTH 242, or a similar course is recommended before enrolling in this course.

Global Health Studies Program Events!

- Policy & professional trip to Washington, DC
- GHS Dinners
- Advocate in residence, lunches, and speakers
- Scholar bonding events





Global Health Scholars in Action!

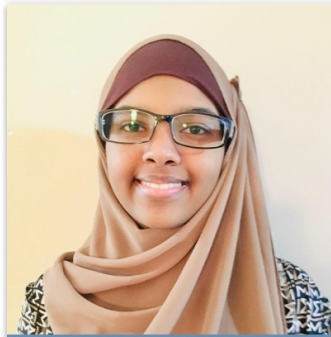


Global Health Scholars in Action!

Global Health Scholars in Action!



Global Health Scholars



Ilham Abdelkadir



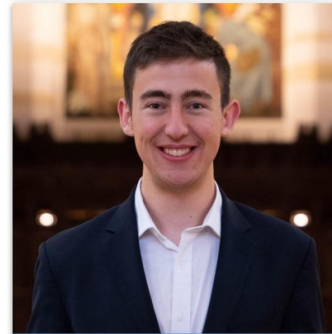
Nabihah Ahsan



Kaleb Assefa



Lily Ates



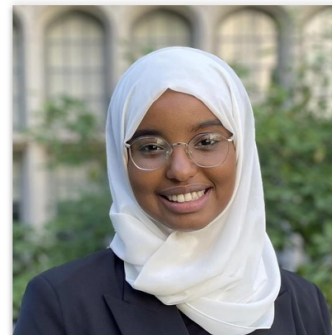
Abe Baker-Butler



Walker Bargmann



Amanda Buster



Ubah Dallin

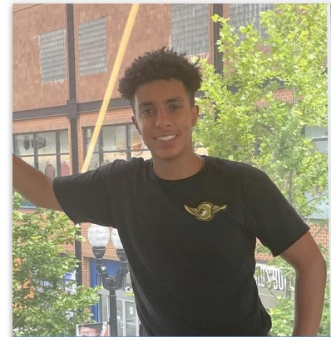


Faith Evanson

Global Health Scholars



Dina Garmroudi



Abel Geleta



Lucy Gilchrist



Noemi Guerra



Aeka Guru



Simona Hausleitner



Krupa Hegde



John Ho

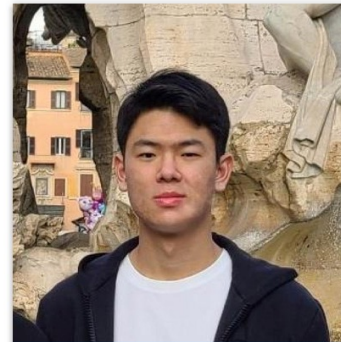


Youssef Ibrahim

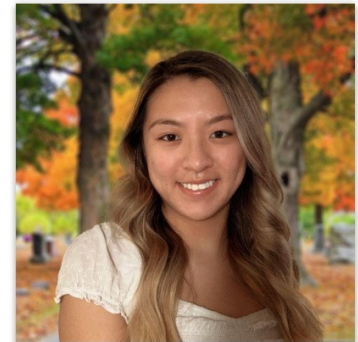
Global Health Scholars



Shan Lateef



Chris Lee



Cathleen Liang



Anjali Mangla



Sofia Manriquez



Sabrina Mellinghoff



Matthew Merritt



Anabel Moore

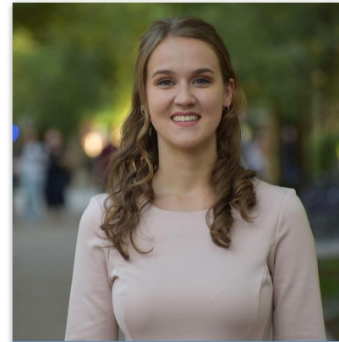


Ushuu Namarra

Global Health Scholars



Himani Pattisam



Emma Peterson



Ananya Rajagopalan



Lusangelis Ramos



Carla Rangel



Gabriel Ransom



Sebastian Romero



Erin Sommers



Derek Song

Global Health Scholars



Lusangelis Ramos



Carla Rangel



Gabriel Ransom



Sebastian Romero



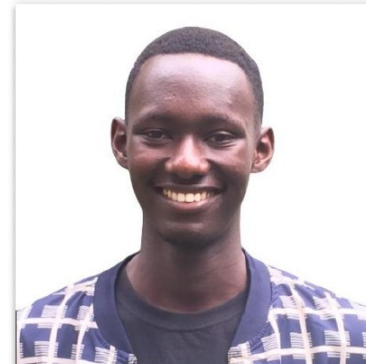
Erin Sommers



Derek Song



Krupa Subramaniam



Christian Tuyishime



Giri Viswanathan

Global Health Scholars



Ketty Nguyen



Chloe Nield



Braiya Nolan



Shreya Nuli



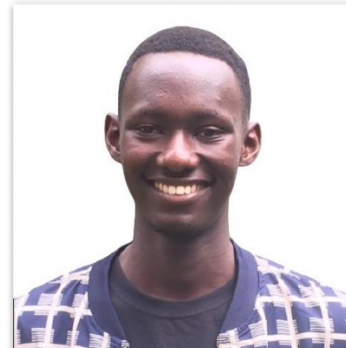
Jennifer Okolo



Shruti Parthasarathy



Krupa Subramaniam



Christian Tuyishime



Giri Viswanathan

Core Teaching Faculty



Prof. Catherine Panter-Brick



Dr. Cara Fallon



Prof. Rob Hecht



Prof. Brandon Ogbunu



Prof. Marney White

Affiliated Faculty



Louisa Lombard



Marcella Nunez-Smith



Saad Omer



Rafael Perez-Escamilla



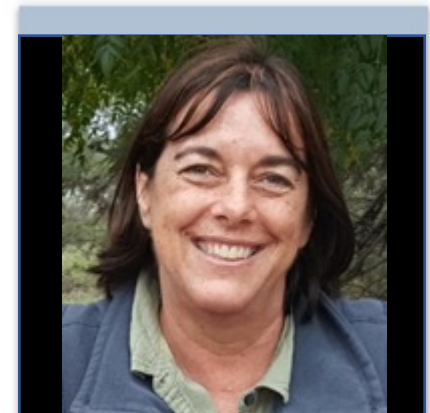
LaRon Nelson



Nathaniel Raymond



Robert Rohrbaugh



Claudia Vaggia

Our faculty connect us with Yale Schools of Medicine, Nursing, Public Health, Law, Arts & Sciences, the Jackson Institute, and the New Haven community

Affiliated Faculty



Robert Dubrow



Nathan Grubaugh



Ashley Hagan



Albert Ko



Emily Wang



Marcia Inhorn



Paula Kavathas



Tracey L. Meares

Our faculty connect us with Yale Schools of Medicine, Nursing, Public Health, Law, Arts & Sciences, the Jackson Institute, and the New Haven community



Engaging with global health policy

In Spring 2023, a group of Scholars traveled to Washington, D.C. to learn more about the global health funding and policy landscape, key agencies and actors, and to develop relationships with individuals and organizations involved in global health policy and advocacy.

LEARN MORE

Global Health Studies

The Global Health Studies Program is designed for undergraduate Yale students interested in understanding and addressing pressing global health challenges.

RELATED LINKS

 [How to Apply](#)

 [Contact Us](#)

 [FAQs](#)

<https://jackson.yale.edu/study/global-health-studies/>

Application Process

For sophomores currently enrolled (and first years/juniors in exceptional circumstances):

October 4 & 11: Info sessions

October 13: Applications open online

November 17: Applications due at 4pm

Before Winter Break: Decisions Communicated

Application Contents

Background information

Resume and transcript

Contact information for one reference

3 Essay Short Questions

- **Question 1 (250 words):** “What motivates you to become a Global Health Scholar?”
- **Question 2 (500 words):** Based on Jeffrey Koplan et al.’s definition of global health (provided), describe a global health-related issue or challenge that is interesting to you, and explain how pursuing interdisciplinary study and collaboration in the Yale Global Health Scholars program would help you better understand and/or address this issue.
- **Question 3 (250 words):** Many social scientists have been critical of global health, but insist that “a critical approach (...) is less about new problems (or solutions) than about new problematizations” (Fassin, 2012). What are some of the problem areas you might see in ‘framing’ current research and practice in global health?

Learn More about our Program!

Talk to Global Health Scholars....



**Global Health Scholars – Yale Jackson
School of G...**
jackson.yale.edu

Learn about the program, courses, & more



**Global Health Studies – Yale Jackson
School of Gl...**
jackson.yale.edu

Apply now!



2023 Global Health Scholars Application
apply.jackson.yale.edu

Questions?